

975EVO



TrenchIntel

TrenchIntel
DGPS guidance system:
 Extra high precision 3D GPS system
 Automatic depth and grade control
 Autosteering to a predefined path
 Pass optimization and fleet control



TrenchTronic

TrenchTronic 5.0
Electronic Control with:
 Operator selectable digging pressure and automatic operation
 Fully automatic operation
 Remote diagnostic system



Re.M
Remote Control with:
 Machine data remote monitoring
 Fleet location management
 Troubleshooting information
 Operating conditions



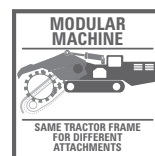
TRENCHING DIMENSIONS

0-14"
 0-35 cm

9'6"
 290 cm

FEATURES AND APPLICATIONS

The Rock Hawk version of the 975 EVO model is conceived as a small-size machine for surface mining and bulk excavation with its 9' 6" (290 cm) wide drum. TrenchTronic 5.0 equipped.



BULK EXCAVATION WORKS



RAILWAY SOIL PREPARATION



SOIL RECLAMATION



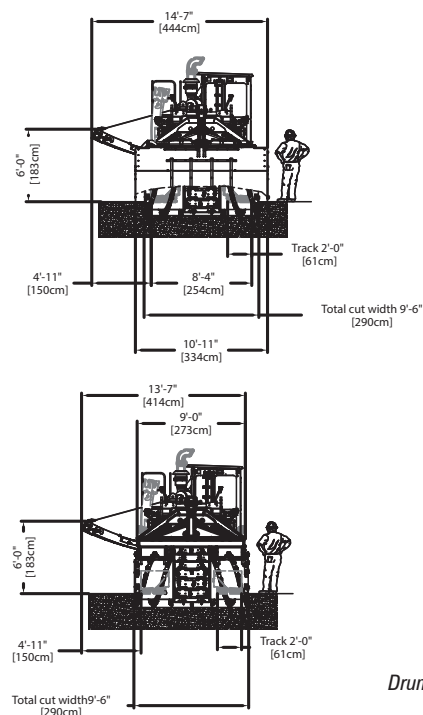
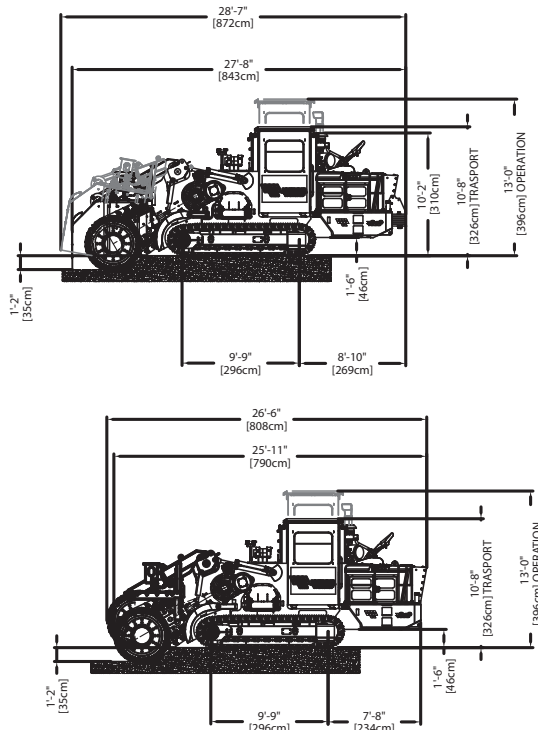
TUNNEL WORKS



SURFACE MINING



CHANNEL EXCAVATION



975EVO ROCK HAWG TECHNICAL SPECIFICATIONS

Standard Features

Pressurized cab with air conditioning, heating, sound suppression
Elevating cab module with roll over protection (ROPS-FOPS)
Electrical system: 24 V
Anti vibration isolator mounts: used on engine, radiator/oil cooler unit and cab
Positive locking digging chain adjustment

Trenching Dimensions

Excavation width.....9' 6" (290 cm)
Excavation depths range.....0-14" (0-35 cm)

Engine

HIGHLY REGULATED COUNTRIES (EU, USA)
Model.....Caterpillar C9.3B US EPA Tier 4 / EU Stage V, turbocharged and after cooled
Max gross horsepower.....375 hp (280 kW)
Max no load rpm.....2000 rpm
Fuel tank capacity.....174 gal (660 l)
Fuel consumption at full load.....18 gal/hr (68 l/hr)
Urea tank capacity.....17.3 gal (65.4 l)
Estimated max urea consumption at full load.....
.....8% of fuel consumption
Cooling rating adequate for 130° F (54.4° C) ambient air temperature
Air cleaner: dry type, 2 stages with dual precleaner

LESSER REGULATED COUNTRIES
Model.....Caterpillar C9.3B LRC (EPA Tier 3 equivalent), turbocharged and after cooled
Max horsepower at no load.....375 hp (280 kW)
Max no load rpm.....2000 rpm
Fuel tank capacity.....174 gal (660 l)
Fuel consumption at full load.....18 gal/hr (68 l/hr)
Cooling rating adequate for 130° F (54.4° C) ambient air temperature
Air cleaner: dry type, 2 stages with precleaner and automatic dust ejection

Operating and Transport Weight

Weight.....97,000 lbs (44,000 kg)
Ground pressure.....17.8 psi (1.21 kg/cm²)

Trencher Drive

Hydrostatic: two pumps and two motors capable of transmitting full engine horsepower in the digging speed range from 522- 970 fpm (159-296 m/min)
Flywheel gearboxes, shaved, helical gearing, case hardened for extreme shock load
Four operator selectable digging speed ranges. Drum speeds:
.....0-490 fpm (0-150 m/min)
.....0-690 fpm (0-210 m/min)
.....0-890 fpm (0-270 m/min)
.....0-990 fpm (0-300 m/min)
Max digging chain pull:
.....Peak 252 kN (56,700 lbs)
.....Continuous 98 kN (21,800 lbs)
No.2 chains Cat 54/345 or equivalent
Standard cutters: rotary carbide tipped 1,5" (3.8 cm) shank diameter
Cutting Mode: Up Cutting

Crawler Drive

Dual path, hydrostatic drive, planetary transmissions capable of full counter rotation with single lever steering, single lever direction
Infinitely variable speed: forward and reverse
Speed ranges:
• High range.....0-1.71 mph (0-2.75 km/hr)
• Low range.....0-0.86 mph (0-1.38 km/hr)
Integral parking and service brake: spring applied, hydraulic release, wet disc brake

Tracks

Overall track length.....9' 9" (298 cm)
Track pad type: triple grouser (single or double grouser also available as option)
Track chain type: Caterpillar D5
Track pad width.....2' (61 cm)

Hydraulic Transmission

Pressure and flow compensated (load sensing)
Pump flow maximum.....43 gpm (164 l/min)
Pressure setting.....2,500 psi (172 bar)
Oil tank capacity.....73 gal (275 l)

Cross Conveyor

Pressure and flow compensated pump with dual hydraulic drive motors
Reversible and shiftable
Belt speed infinitely variable 0-790 fpm (0-240 m/min)
Discharge direction: right or left
Conveyor belt width.....1' 11" (60 cm)
Conveyor length.....8' 2" (250 cm)
Discharge height.....4' 9" (145 cm)

Transport Dimensions

Height over cab.....10' 6" (321 cm)
Length.....27' (822 cm)
Width, with drum.....9' 6" (286 cm)
Width, without drum:
without motor removal.....9' 5" (286 cm)
with motor removal.....8' 4" (254 cm)

Main Available Devices

Ask Tesmec for a complete devices list

1150Evo



TESMEC
Trencher



TrenchIntel

TrenchIntel

DGPS guidance system:

Extra high precision 3D GPS system
Automatic depth and grade control
Autosteering to a predefined path
Pass optimization and fleet control



TrenchTronic

TrenchTronic 5.0

Electronic Control with:

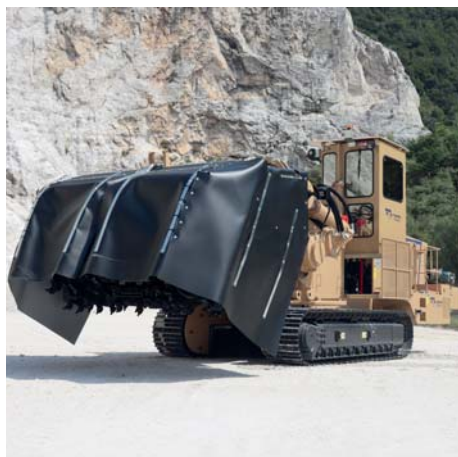
Operator selectable digging pressure and automatic operation
Fully automatic operation
Remote diagnostic system

Re.M
Remote Monitoring Systems

Re.M

Remote Control with:

Machine data remote monitoring
Fleet location management
Troubleshooting information
Operating conditions



TRENCHING DIMENSIONS

DOWN-CUTTING

0-1'8"
0-50 cm

10'6"
320 cm

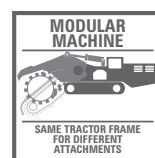
UP-CUTTING

0-1'8"
0-50 cm

10'6"
320 cm

FEATURES AND APPLICATIONS

The Rock Hawk version of the 1150EVO model has been designed for continuous surface mining; its 10' 6" (320 cm) wide drum is employed in bulk-excavations projects and open-pit quarries. Elevating cab, hydraulic stabilizers and TrenchTronic 5.0 equipped. It can work up-cutting or down-cutting by simply changing the attachment.



BULK EXCAVATION WORKS



RAILWAY SOIL PREPARATION



SOIL RECLAMATION



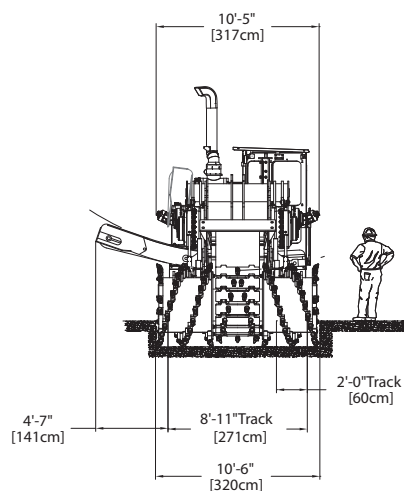
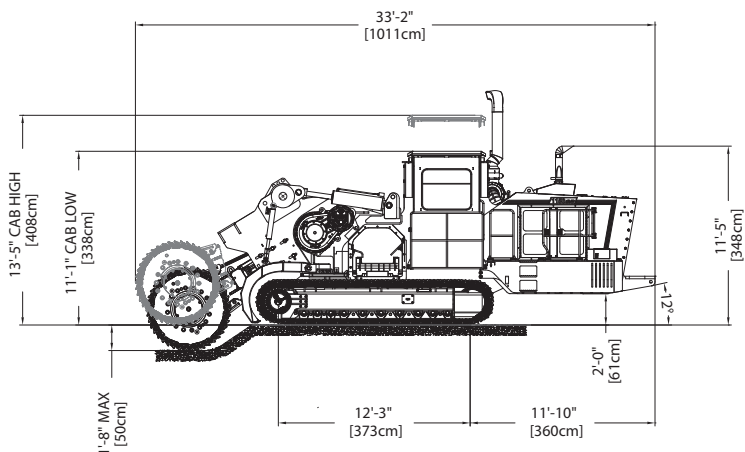
TUNNEL WORKS



SURFACE MINING



CHANNEL EXCAVATION



UP-CUTTING
CONFIGURATION
SHOWN

1150EVO ROCK HAWG TECHNICAL SPECIFICATIONS

Standard Features

Pressurized cab with air conditioning, heating, sound suppression

Elevating cab module with Roll-Over Protective Structure (ROPS) and Falling Object Protective Structure (FOPS)

Electrical system: 24 V

Stabilizers with adjustable drags

Fuel and hydraulic tank: aircraft quality locking caps

Gearboxes, fuel and hydraulic tanks: pressurized with 5 psi (0.3 bar) filtered breathers

Vibration isolator mounts: used on engine, radiator, oil cooler, exhaust silencer and cab

Cab and compartment security locks

Trenching Dimensions

Excavation width.....10' 6" (320 cm)

Excavation depths range.....0-1' 8" (0-50 cm)

Note: dependent on configuration and options

Engine

HIGHLY REGULATED COUNTRIES (EU, USA)

Model.....Cummins X12 EPA Tier 4 final/ Stage V

Max horsepower.....451 hp (336 kW)

Max no load rpm.....1.850 rpm

Fuel tank capacity.....358 gal (1355 l)

Urea tank capacity.....30 gal (113 l)

Fuel consumption.....21,5 gal/hr (81 l/hr) at full load

Estimated max urea consumption at full load.....4% of fuel consumption

Cooling rating adequate for 122° F (50° C) ambient air temperature

Air cleaner: dry type, 2 stages with pre-cleaner and automatic dust ejection

LESSER REGULATED COUNTRIES

Model.....CAT C13 ACERT Tier 3

Max horsepower.....440 hp (328 kW)

Max no load rpm.....2.100 rpm

Fuel tank capacity.....324 gal (1.230 l)

Fuel consumption.....23 gal/hr (87 l/hr) at full load

Cooling rating adequate for 122° F (50° C) ambient air temperature

Air cleaner: dry type, 2 stages with pre-cleaner and automatic dust ejection

Operating and Transport Weight

Weight.....127,867-131,615 lbs (58.000-59.700 kg)

Ground pressure.....18.4-19.0 psi (1.30-1.33 kg/cm²)

Note: dependent on configuration and options

Trencher Drive

Hydrostatic: two pumps and two motors capable of transmitting full engine horsepower in the digging drum speed range from 395 FPM (120 m/min) up to 790 FPM (241 m/min)

Flywheel gearboxes: shaved, helical gearing, case hardened for extreme shock load

Infinitely variable drum speed.....0-790 FPM (0-241 m/min)

Digging chain: CAT 54/345 or equivalent

Cutters: rotary carbide tipped 1 1/2" (3.81 cm) shank

diameter 3" (7.62 cm) gage

Drum tool tip diameter: 5'4" (163.5 cm)

Hydraulic digging chain adjustment

Crawler Drive

Dual path, hydrostatic drive, planetary transmissions capable of full counter rotation with single lever steering, single lever direction

Infinitely variable speed: forward and reverse

• High range.....0-2.05 mph (0-3,3 km/hr)

• Low range.....0-0.93 mph (0-1,5 km/hr)

Integral parking and service brake: spring applied, hydraulic release, wet disc brake

Tracks

Overall track length.....12' 5" (378 cm)

Track pad type: single, double or triple grouser

Track chain type: Caterpillar 42/325 or equivalent

Track pad width.....1' 11" (60 cm)

Hydraulic Transmission

Pressure and flow compensated (Load sensing)

Auxiliary pump flow maximum.....66 gpm (250 l/min)

Auxiliary pressure setting.....2.500 psi (172 bar)

Oil tank capacity.....104 gal (394 l)

Cross Conveyor (on up-cutting only)

Pressure and flow compensated pump with dual hydraulic drive motors

Reversible and shiftable

Belt speed infinitely variable.....0-750 fpm (0-229 m/min)

Discharge direction: right or left

Conveyor belt width.....2' 6" (76 cm)

Conveyor length.....13' 8" (416 cm)

Discharge height.....4'1" - 5'11" (124-181 cm)

Transport Dimensions

Length.....34' 4" (1045 cm)

Width*.....10' 6" (320 cm)

Height with cab.....11' 5" (348 cm)

*Width can be reduced to 9' 10" (300 cm) dismounting the drum

Main Available Devices

Ask Tesmec for a complete devices list